

tipo di intervento: **OPERE PER LA RIQUALIFICAZIONE ENERGETICA DEL PALAZZO SEDE COMUNALE IN NOVAELETTRIA**  
PROGETTO ESECUTIVO

Comittente: COMUNE DI NOVAELETTRIA

Progetto: Arch. MARIA CHIARA FERRANTI  
Studio Associato Ing. G. C. Di. Ing. M. C. Ferranti via XXV Maggio, 135/A - Novafeltria (RN)  
Codice Fiscale 0341330374 - mail: [studiochiara@provincia.rn.it](mailto:studiochiara@provincia.rn.it) - [www.studiochiara.com](http://www.studiochiara.com)

ubicazione: piazza Vittorio Emanuele n. 2 - Novafeltria (RN)

Innovatori: **STUDIO DI FATTO - PROGETTO**  
Pagine: Progetti - Stralci

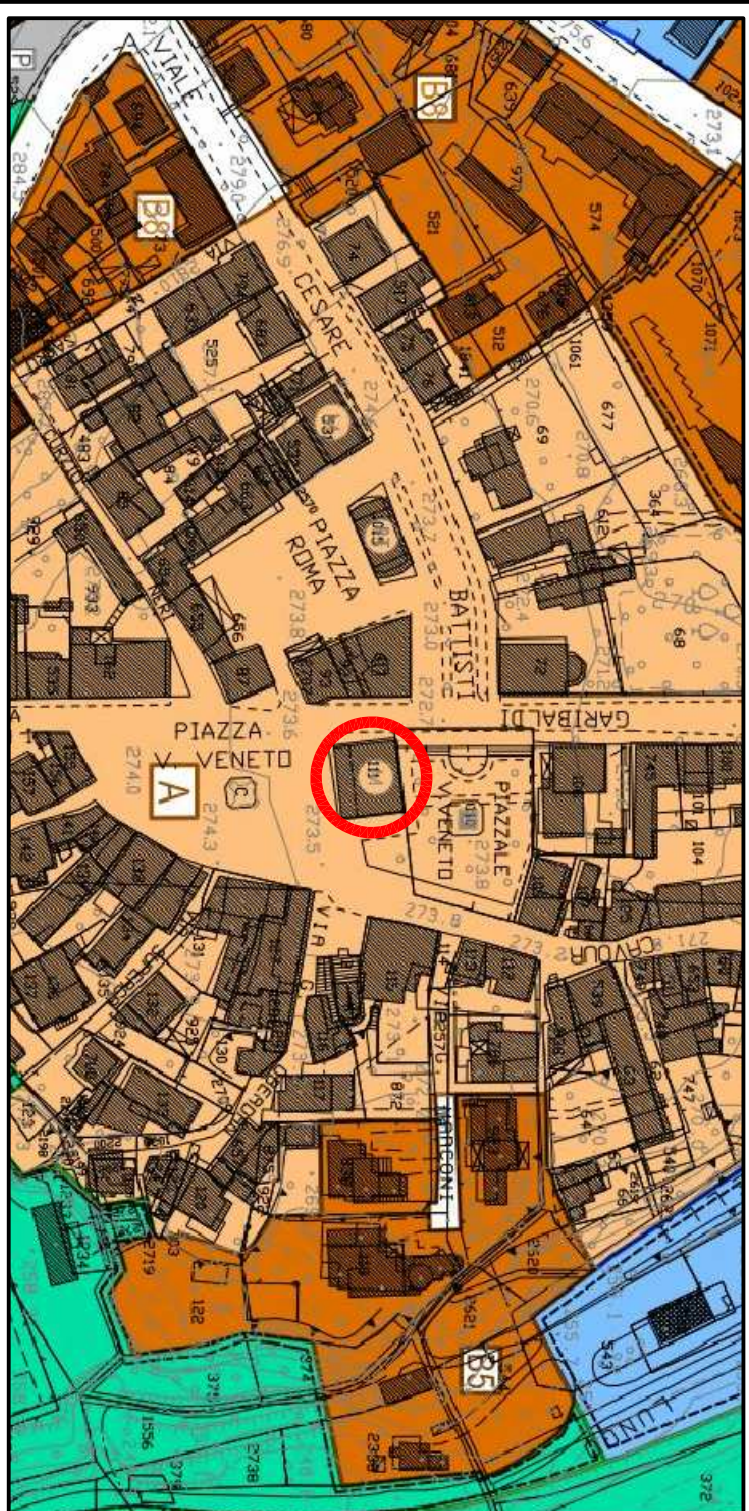
Unica

scopo disegno: altro

data: Febbraio 2021



PLANIMETRIE GENERALI  
Scala: 1:500 - Zona urbanistica A

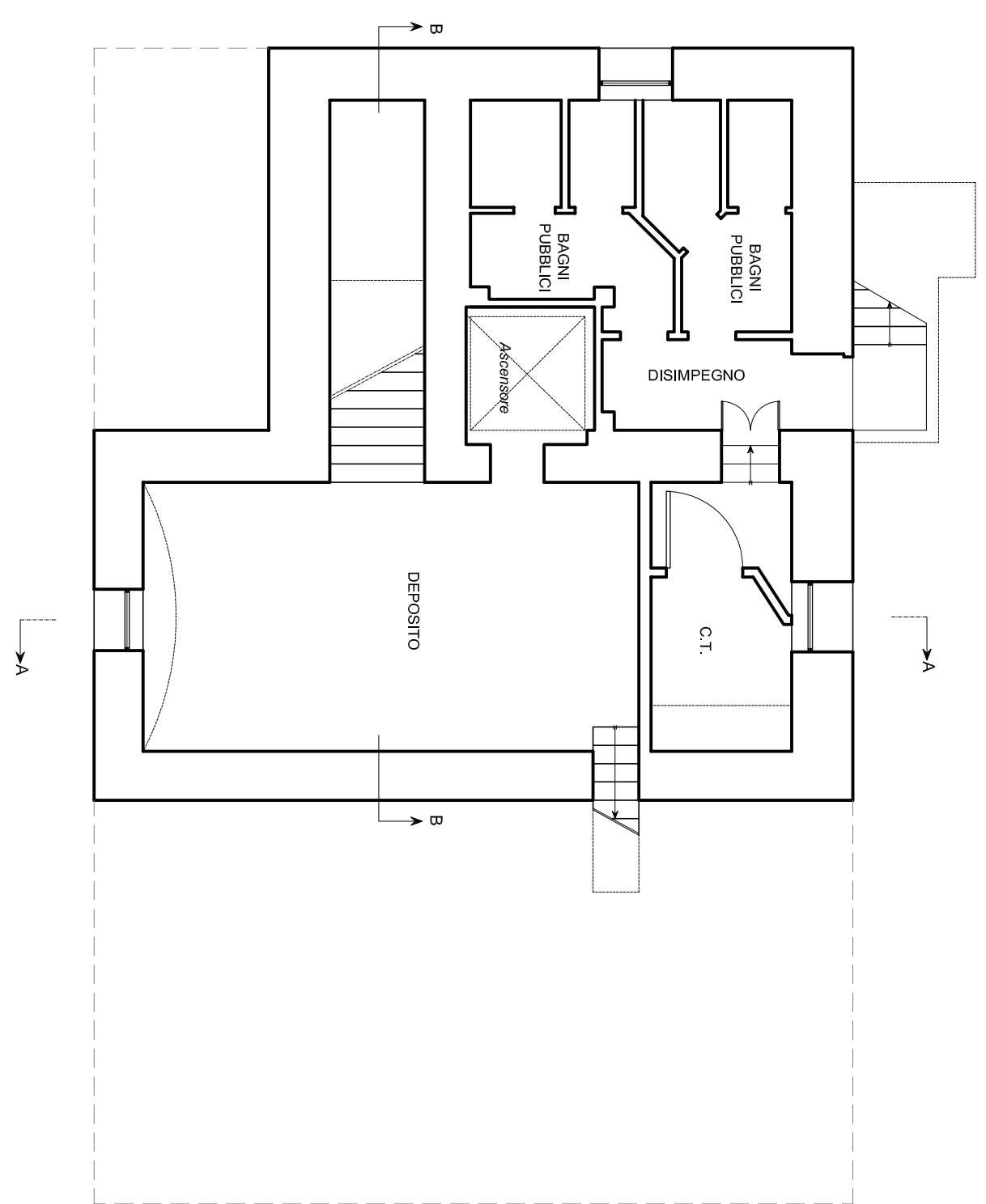


ESTRATTO DI MAPPA CATASTRALE scala 1:1000 - Foglio 13 P.111

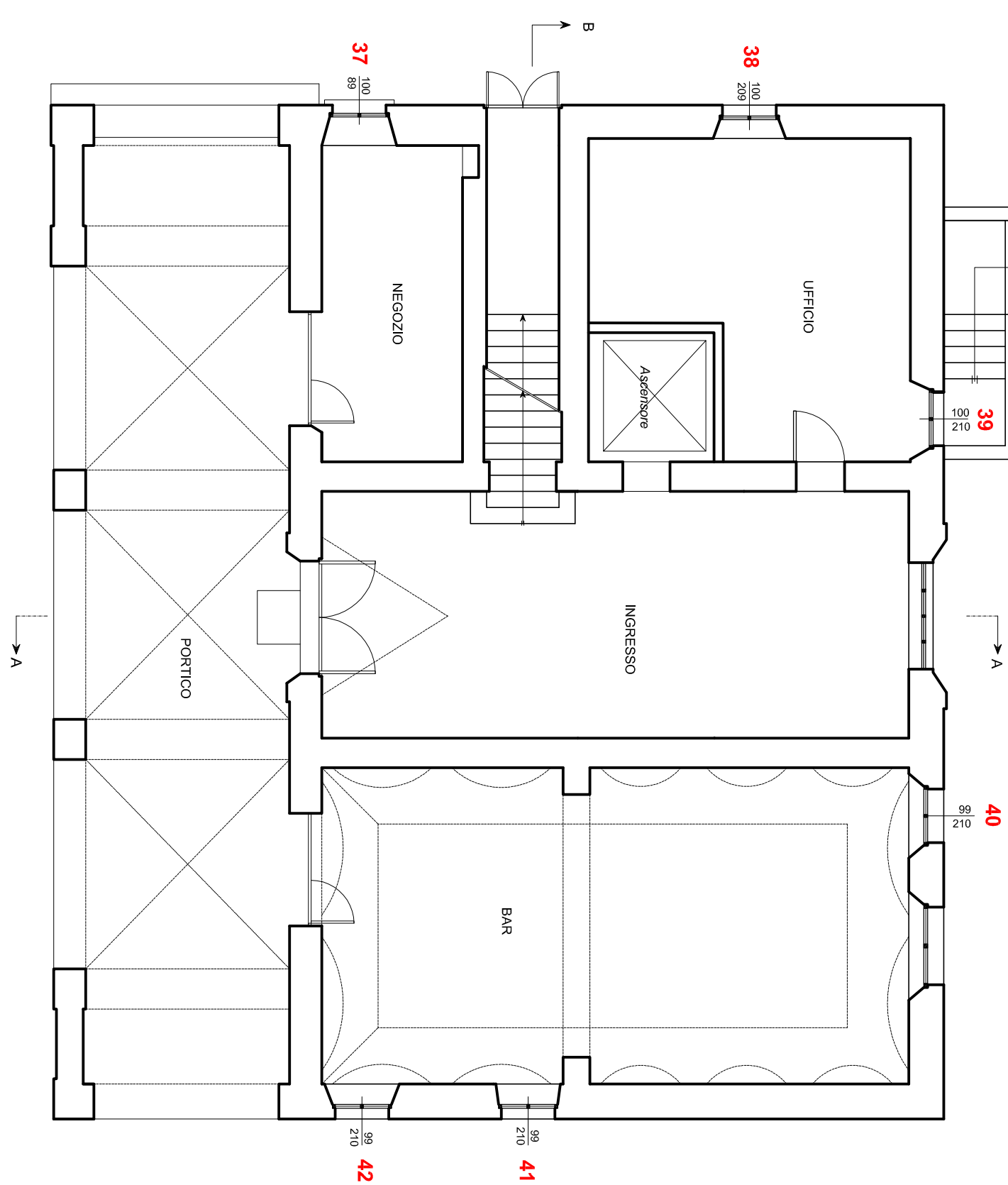


Scala 1:100

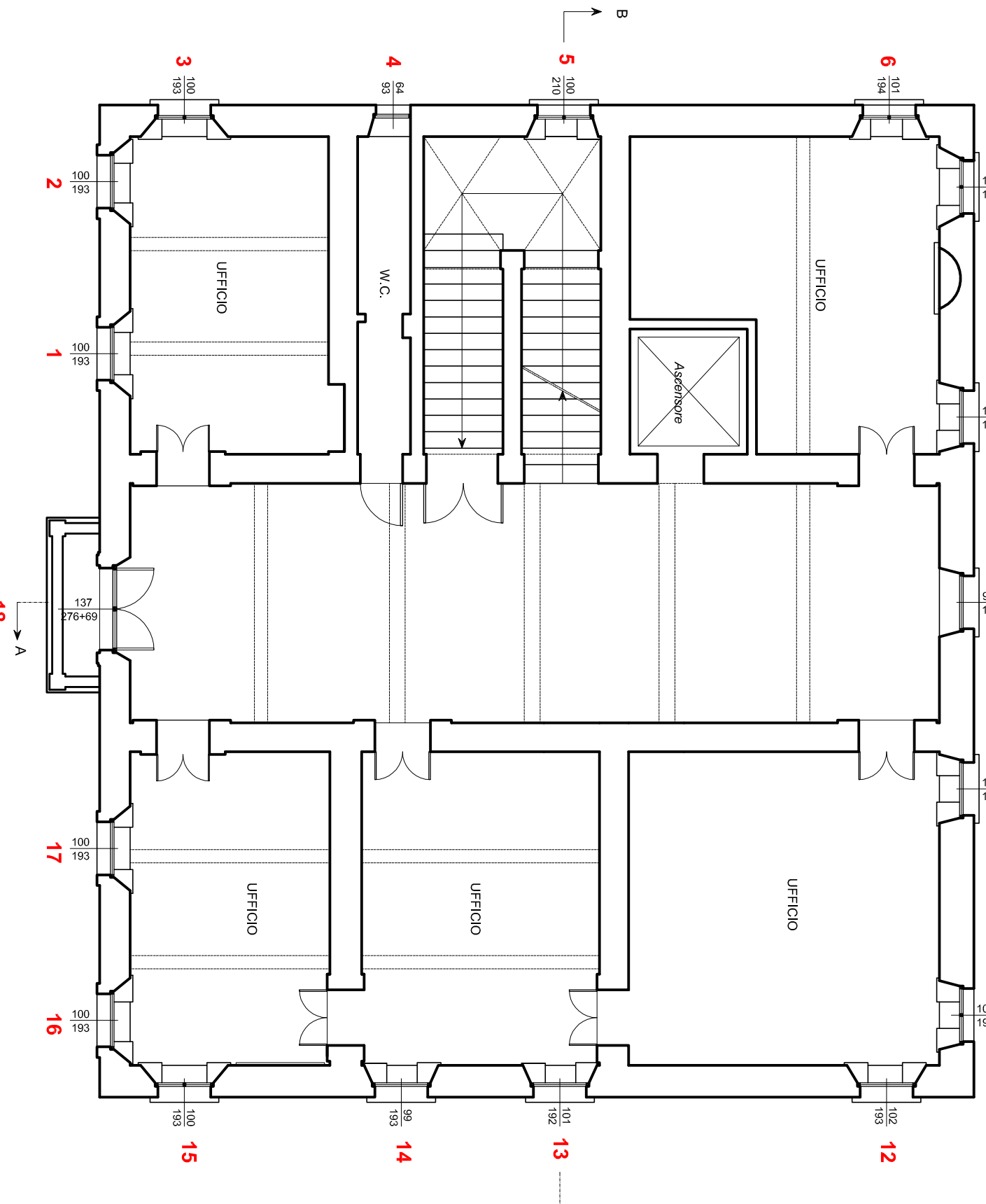
PIANO INTERATO



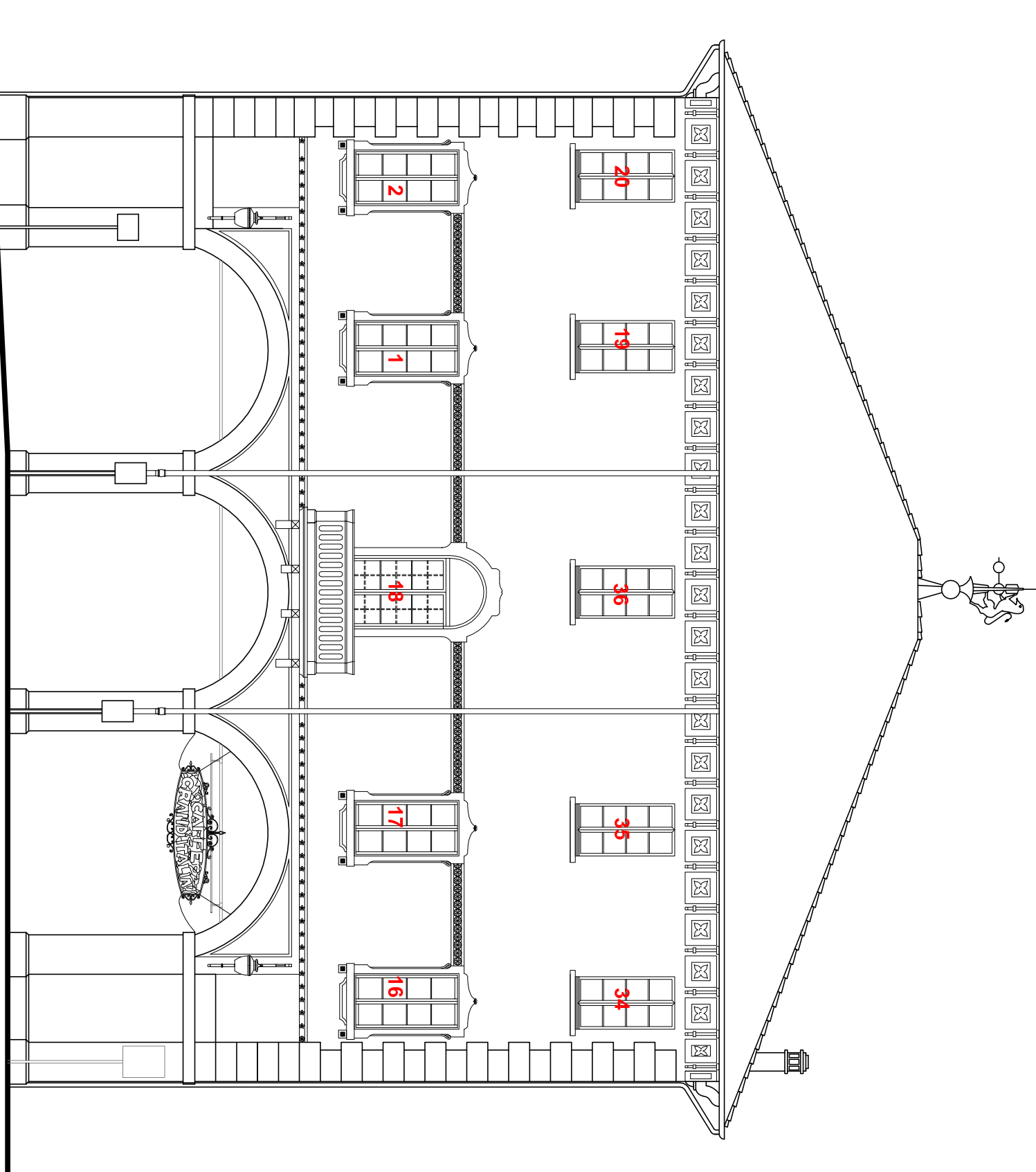
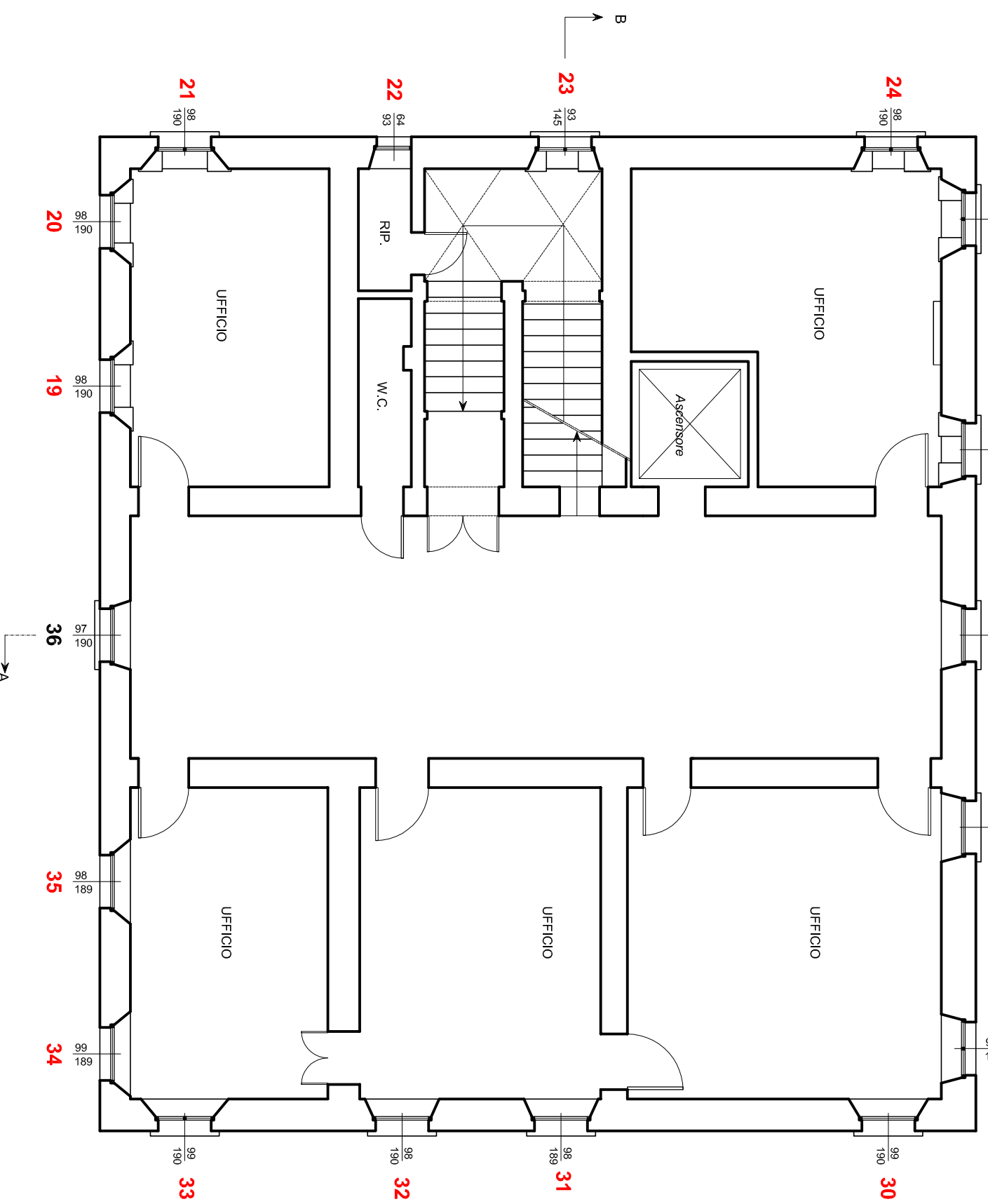
PIANO TERRA



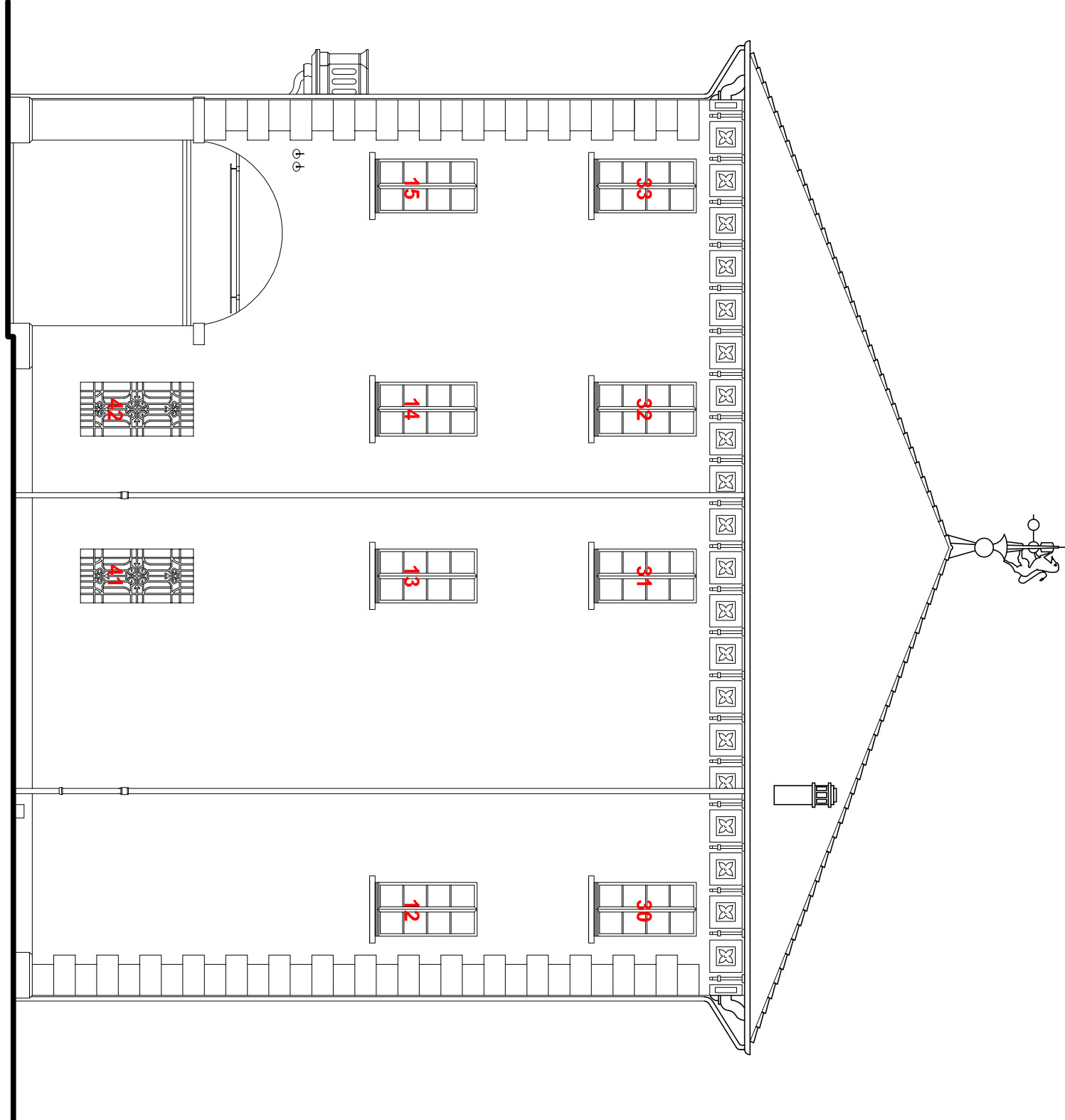
PIANO PRIMO



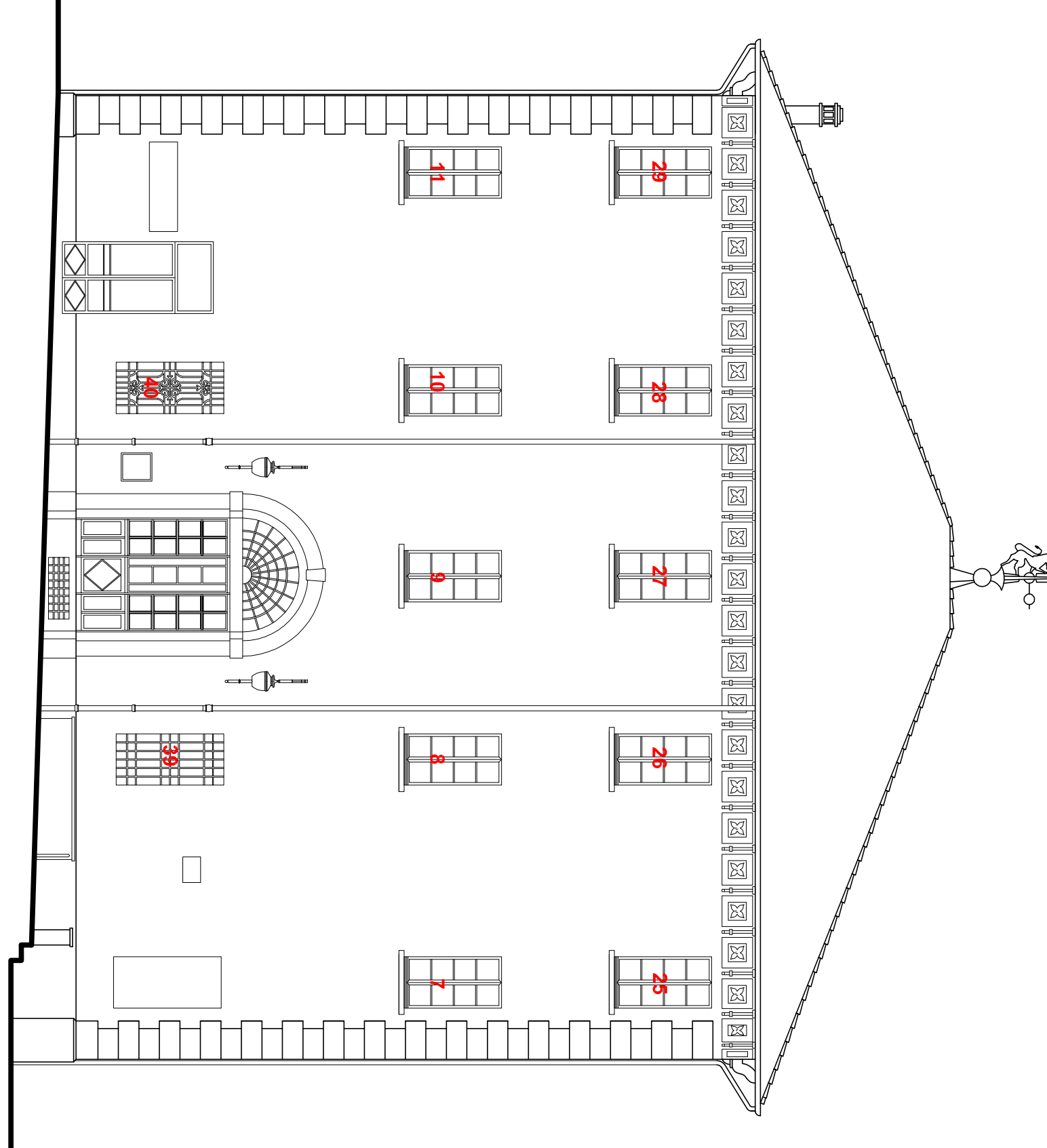
PIANO SECONDO



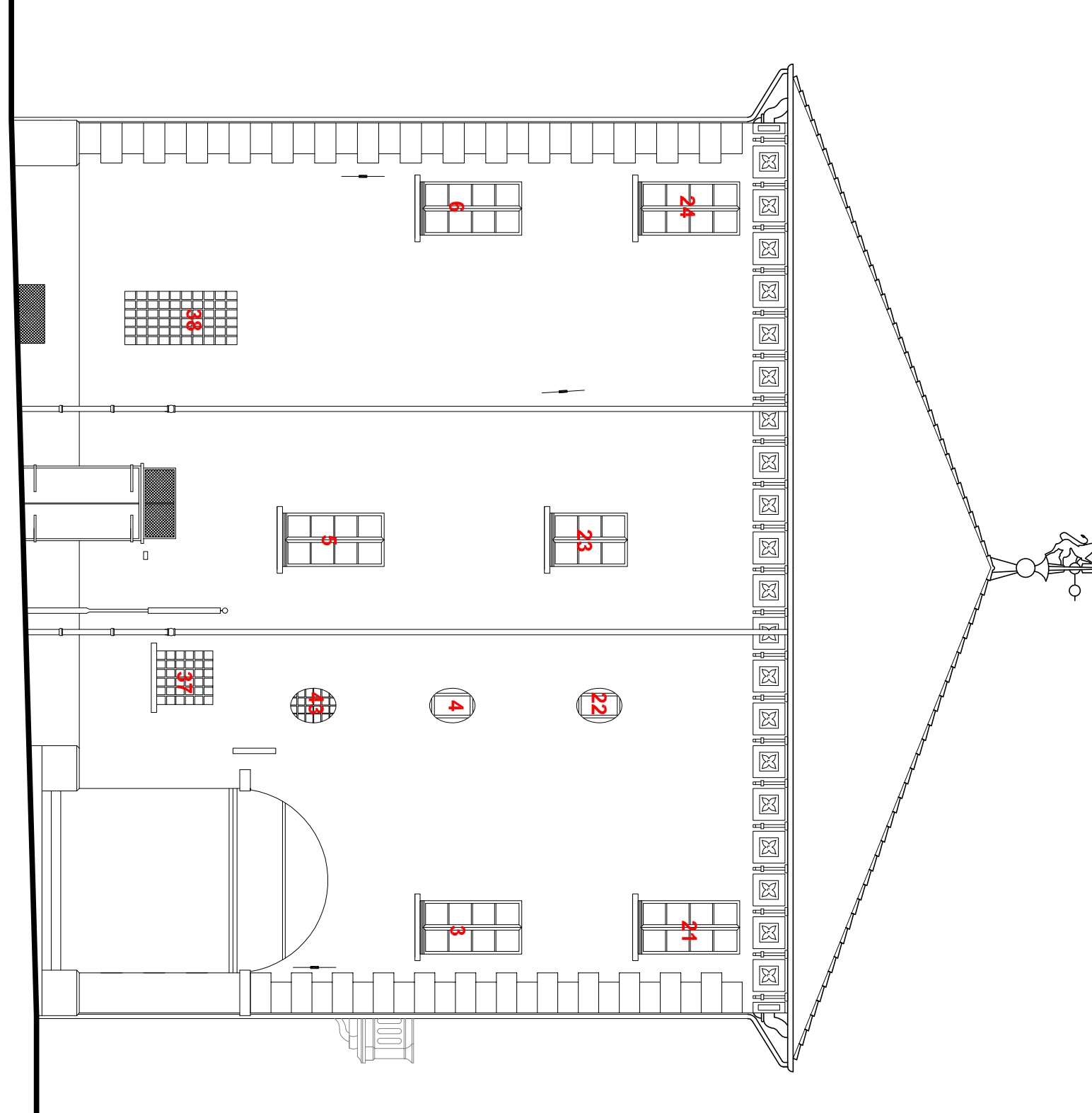
PROSPETTO FRONTALE



PROSPETTO FIANCO DESTRO

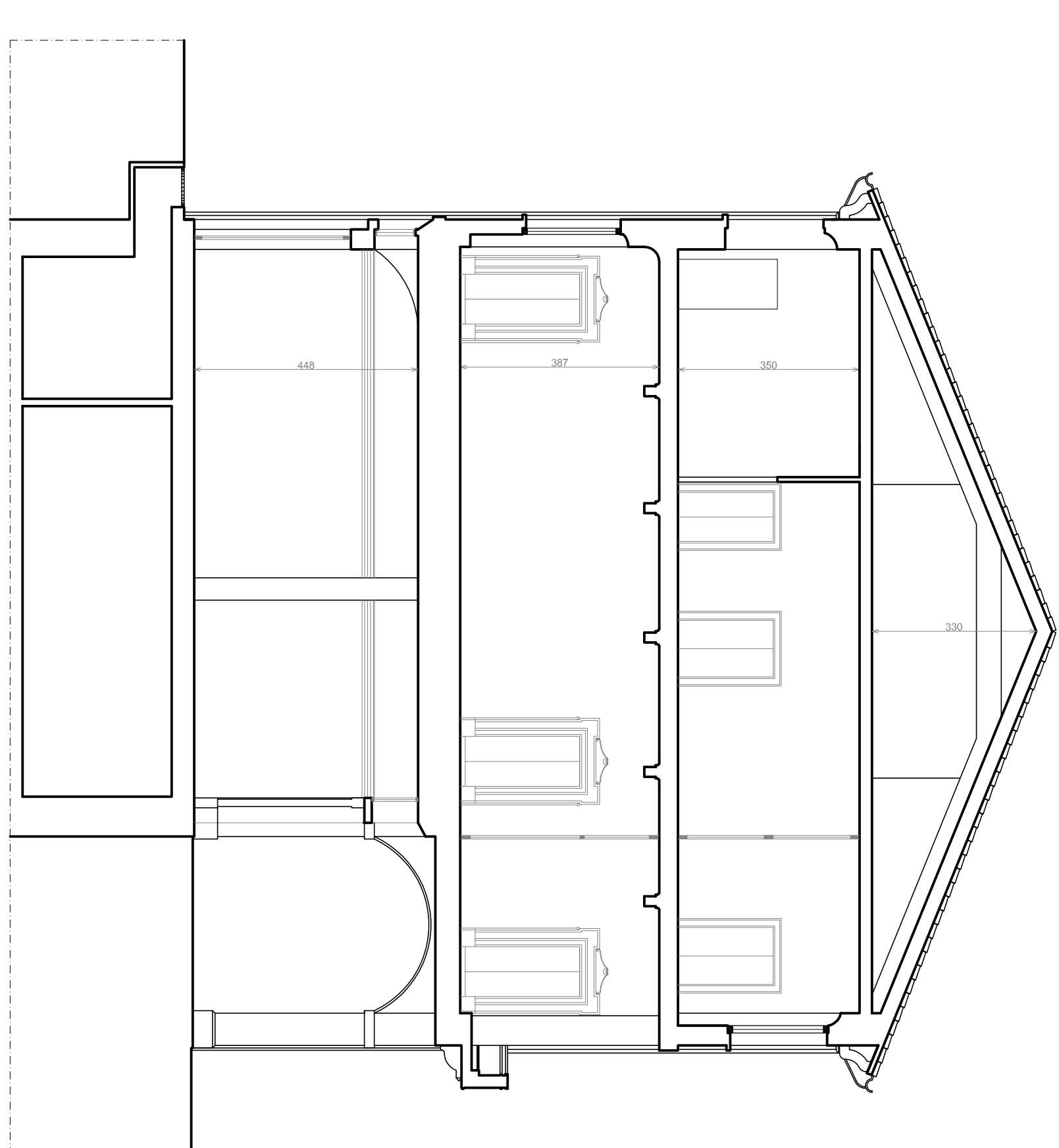


PROSPETTO RETROSTANTE



PROSPETTO FIANCO SINISTRO

SEZIONE A - A



SEZIONE B - B

